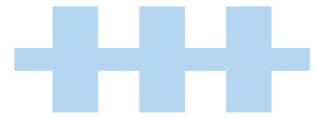


LF



LF Engineering Sdn Bhd (631787-W)

Lot 4306-4312, Mukim Serendah, Jalan Kampung Mohd. Taib,
Kawasan Perindustrian Sg Choh, 48200 Serendah, Selangor Darul Ehsan.
Tel : 03-6093 7022 Fax : 03-6093 5022 H/P : 016-381 2577, 016-412 4727
Email : lfengsb@gmail.com



LF Engineering Sdn Bhd is a fully integrated Malaysia incorporated manufacturer of Highway Guardrail & Accessories. Our Products are manufactured strictly conforming to (AASHTO) standard and are certified by Sirim.

As an affiliated company to LeForm Group of companies, LF Engineering Sdn Bhd have accessed to facilities and technical support of the group which includes steel service center, metal fabrication equipment, tool and dye fabrication and other related manufactured steel products.

The highway guardrail and accessories are produced at the new factory in Kawasan Perindustrian Sg Choh under the brand name LF rail and is in compliance with

American Association Of State Highway & Transportation Official (AASHTO)

Standard Industry Research Institute Of Malaysia (SIRIM)

Malaysia Public Work Department Standard (JKR)



HIGHWAY GUARDRAIL PRODUCT FEATURES & APPLICATION

- * To Provide Railing Protection To Motor Vehicle At Dangerous Road Area Such As
 - Steep Slope
 - Obscure Curve/Bend
 - High Embankment
 - Sharp Corner
- * To Absorb Sudden Impact During Collision Thus Minimise Injury To Vehicle And Passenger.
- * To Act As A Directional Railing For Vehicle Moving In The Right Direction.
- * To Act As A Median Barrier For Avoiding Head On Collision.
- * To Act As A Protective Barrier For Pedestrian Along The High Way.

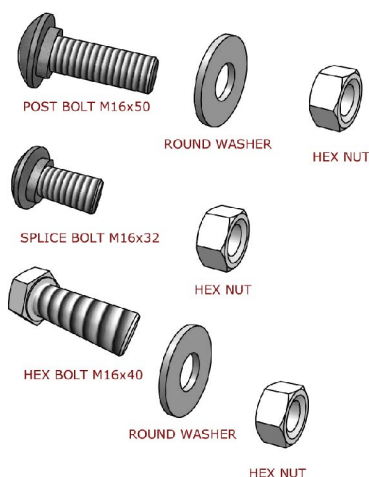
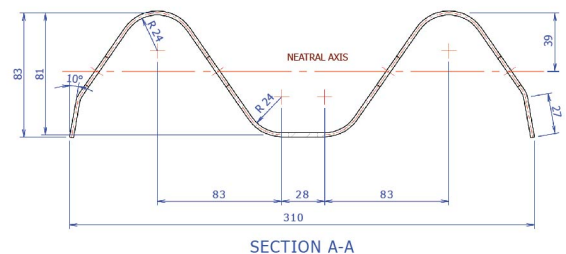
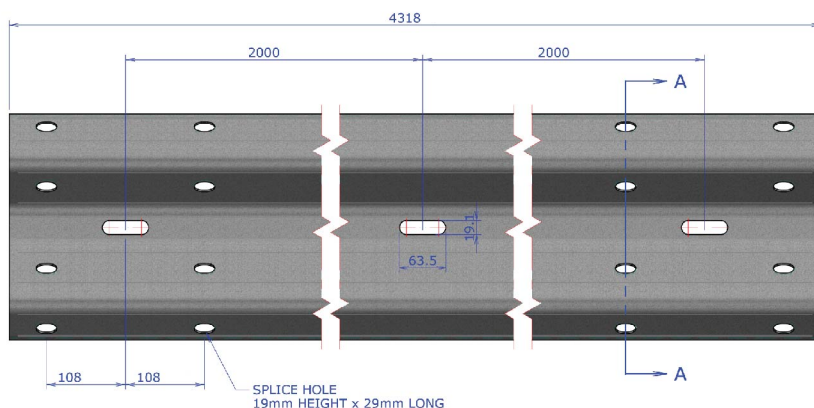
SPECIFICATION AND TECHNICAL DATA

1. Base Metal specification to AASHTO MI 80-89
 - Minimum Yield Strength : 345 N/mm²
 - Minimum Tensile Strength : 483 N/mm²
 - Minimum Elongation : 15%
2. Galvanising specification comply to AASHTO MI 80-89
 - 1100g/m² minimum single spot test (for both side)
 - 1220g/m² triple spot test (for both side)
3. LF dimension to AASHTO MI 80-89

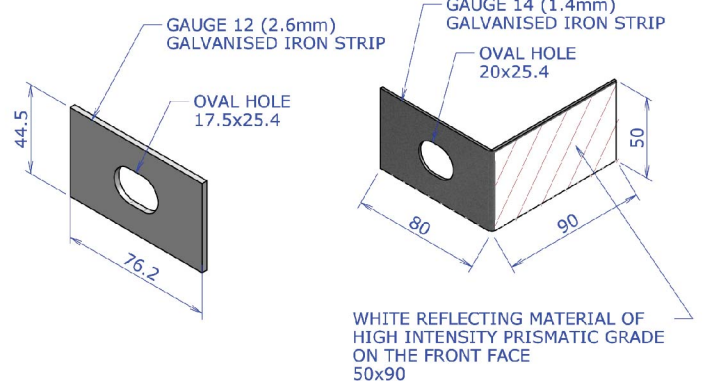
TYPE	EFFECTION LENGTH (MM)	OVERALL LENGTH (MM)	NOMINAL UNCOATED THICKNESS (MM)
LF 1	3810	4128	2.67
LF 2	4000	4318	2.67
LF 3	3810	4128	3.00
LF 4	4000	4318	3.00

(Tolerance allowable under specified thickness)

SECTION THROUGH BEAM



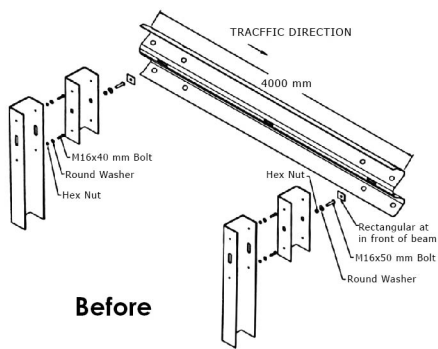
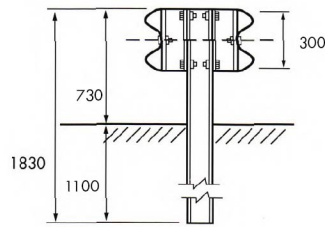
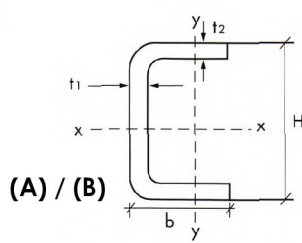
SPLICE BOLT & NUT



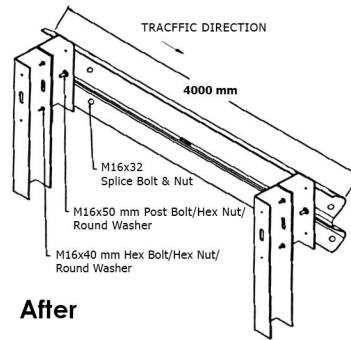
DELINEATOR STRIP

NOTE : All dimension are subject to manufacturer's design tolerance.
All dimension are in millimetre.
SIRIM LICENSE NO : PP001801

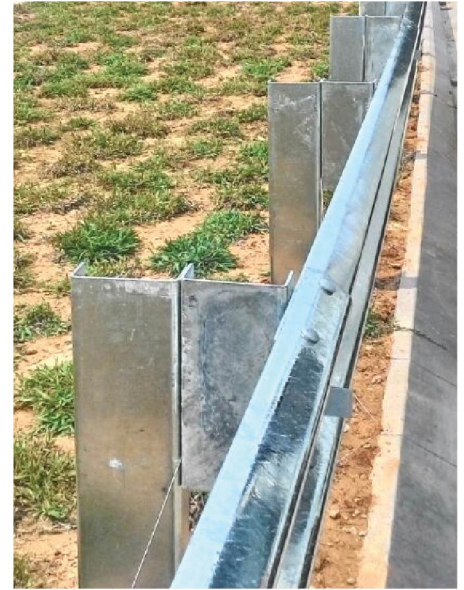
LF POST



Before



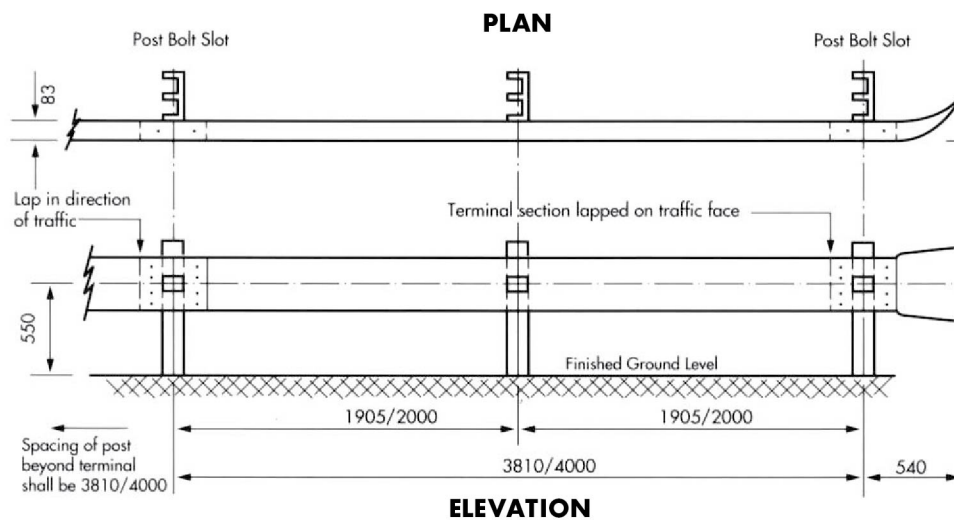
After



TYPE	H x b x t1 x t2 (mm)	Unit Weight (kg/m)
A	C178 x 76 x 6	14.3
B	C150 x 76 x 6	13.4

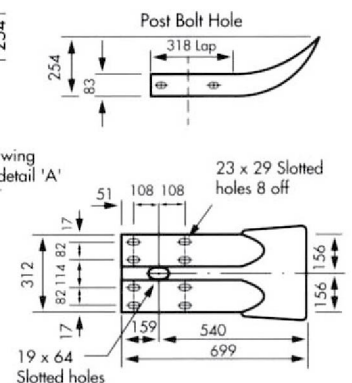
Total length : 1830 mm, subject to customer request.

TERMINAL UNIT (TYPE 1)



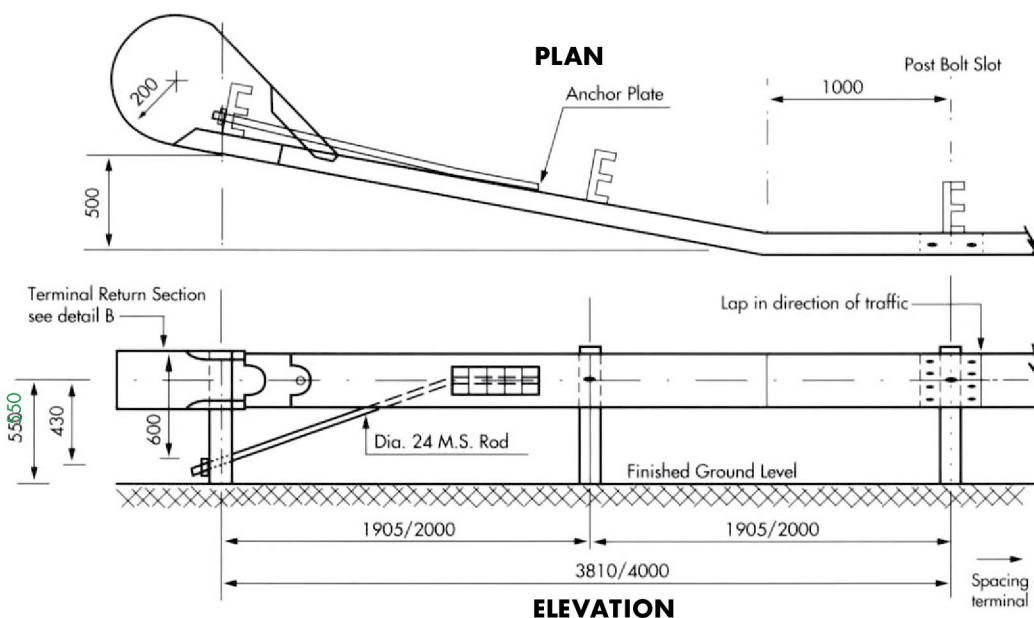
ELEVATION

DETAIL 'A' - END WING PLAN



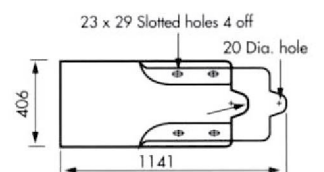
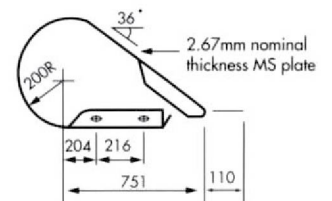
ELEVATION

TERMINAL ANCHORAGE UNIT OR FLARE END (TYPE 2)



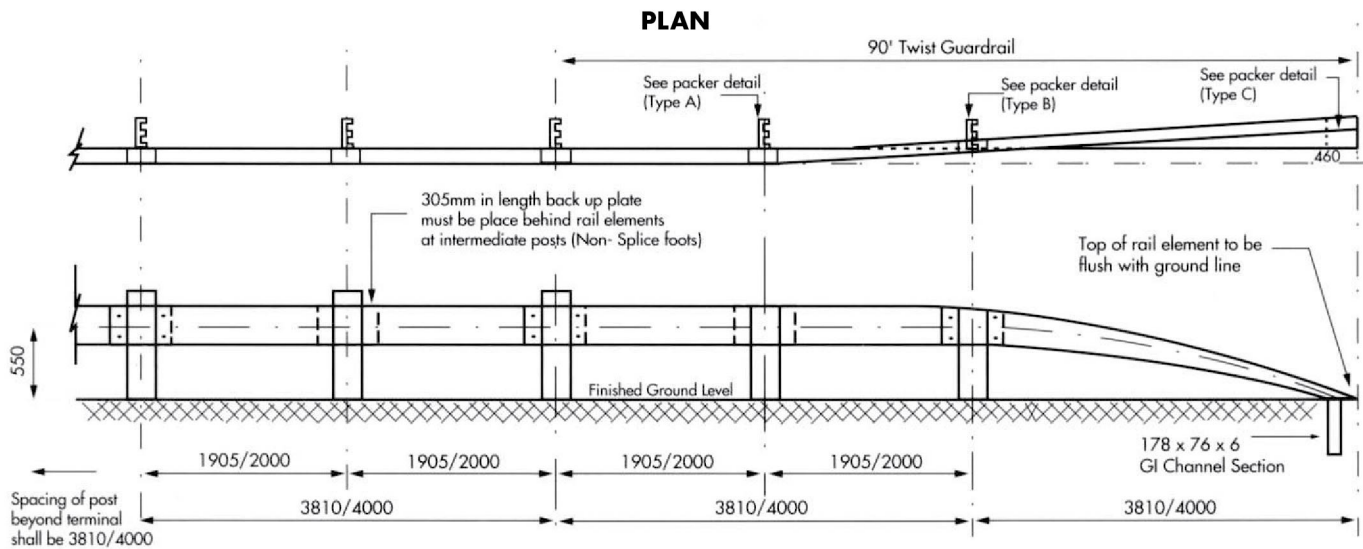
ELEVATION

BUFFER RETURN (Detail B)

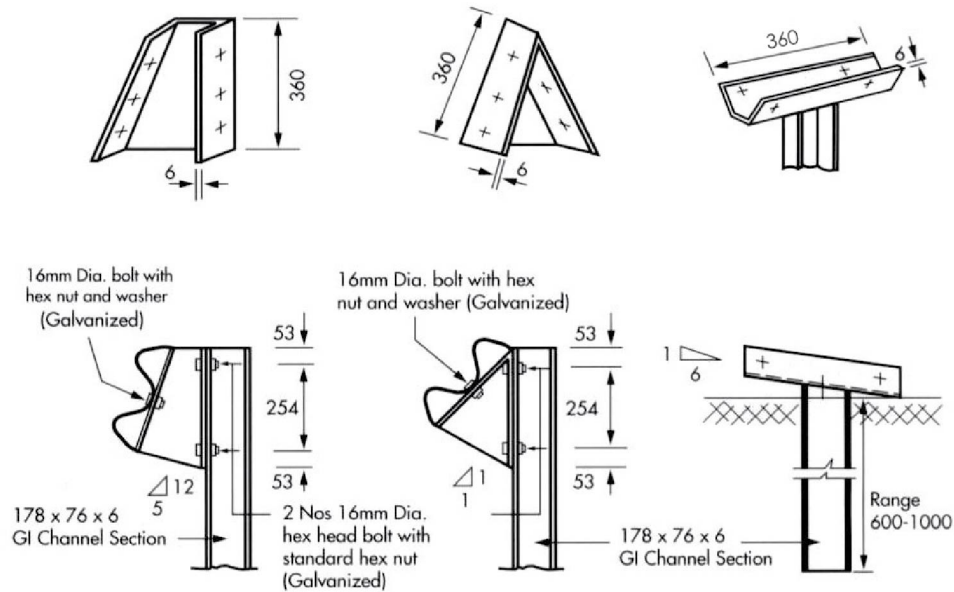


ELEVATION (Detail B)

90° TWIST TERMINAL ANCHORAGE UNIT (TYPE 3)



ELEVATION



PACKER (TYPE A)

PACKER (TYPE B)

PACKER (TYPE C)

TERMINAL SECTION 1:6 (TYPE 4)

